



Watching Video

Concrete Pumps / Boom Pumps

# ECP21ZX

## Boom Type

4 section Z folding

## Vertical Reach

21m

## Horizontal Reach

16.8m

## Depth Reach

11.8m

## Delivery Pipe Diameter

100mm

## Slewing Range

360°

## Outrigger

Diagonal extension (Front)

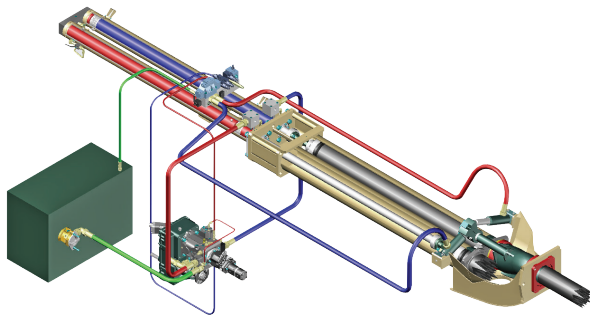
Fixed jack cylinder (Rear)



# EVERDIGM

## FFH SYSTEM (Free Flow Hydraulic)

This type of FFH Hydraulic Pressurized Systems combined with **Rexroth**<sup>®</sup> pumps and **Hawe**<sup>®</sup> boom control block is widely recognized to all over the world due to efficiency and stability. Currently Everdigm Pumps are applying these systems for longtime and widely known and also proven the products to everyone. Based on these facts FFH systems are used all over the world and mostly welcomed. Efficient pumps, less boom bouncing and less noise for while it operates. As above all, these reasons they are providing comfortable working area.



## FEATURES

### PUMPING UNIT

Closed-loop Free Flow Hydraulic System  
 Inductive Proximity Switch and Indicator  
 Single Lip Concrete Piston  
 Hard-Chromed Concrete Cylinder

### BOOM & STRUCTURE

4 Stage Z-Folding Boom  
 Diagonal Extension Front Outrigger (One Stage)  
 Jack Cylinder Rear Outrigger (Fixed)  
 Outrigger Pilot Check Valves  
 Hyd. Motor and Gear Type Boom Slewing  
 High Pressure End Hose (2.5m)  
 Boom & Deck Pipe Diameter 100mm  
 Greasing Port on Boom Link and Pedestal  
 Bubble Gauge on Both Side  
 Hinged Type Side Plates on Platform  
 Water Pump, Water Tank, Cleaning Hose and Spray Nozzle  
 Working Light on Pedestal and Platform

### HOPPER

Easy Clean Type Hopper  
 Hi-Manganese Agitating Paddle  
 400 Liter Volume Hopper  
 Hopper Outlet Diameter 125mm  
 S2012 Type S-tube (Dia.200-125mm)  
 ZX connection type elbow (Dia.125mm) on hopper outlet  
 Reducing Pipe (Dia.125-100mm)  
 Tungsten Carbide Wear Ring and Plate  
 Single Agitator Motor  
 Auto Lubrication  
 Working Light on Hopper

Direct connecting main pump and hydraulic cylinders  
 improve pumping efficiency

Less peak pressure & less boom bouncing by peak  
 pressure control

No need of big oil tank

Cut down maintenance cost

Applying suction filter

Prevent contamination in main pump

Centralized pumping controller

Easy access and maintenance

### CONTROL KIT

Wire Remote Control (40m Cord)  
 Wireless Remote Control (Proportional)  
 Remote ON/OFF Pumping  
 Remote ON/FF Engine  
 Infinite Variable RPM Control  
 Boom Control Block  
 Outrigger Control Block on Both Side  
 Emergency Stop Switch  
 Electric Main Control Panel and Local Controller  
 Pneumatic Solenoid Valve Type PTO Control  
 Stroke Changeover Switch

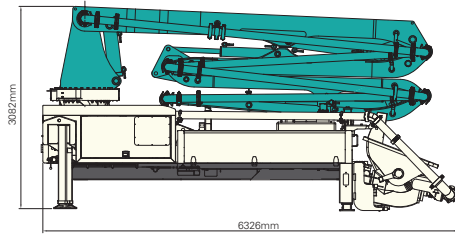
### OPTIONAL

Boom	Auto Lubrication
	One Side Support (OSS) System
	Working Light
Outrigger	Outrigger Pads and Compartment
	Cover
Hopper	Safety Device
	Central Manual Lubrication
	Vibrator
Platform	Handrail on Rear Step
	Spare Tire Storage Bracket
Paint	Customized Color

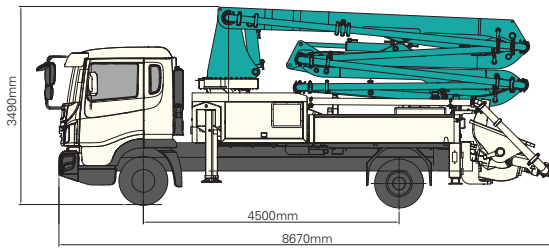
Note) For more optional item not mentioned above please consult the manufacture.

# SPECIFICATIONS

## DIMENSIONS



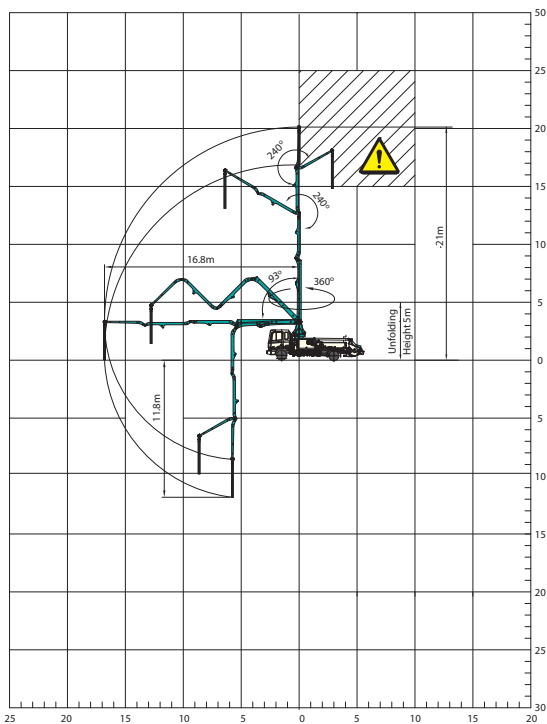
Pump Unit Weight	8,110kg
Water Tank Capacity	400L



Front Axle Loading Weight	5,000kg
Rear Axle Loading Weight	13,100kg

\* Weight and dimension figures here are subject to change on various chassis option and additional axle application etc.

## WORKING RANGE



⚠ Don't use in caution area

UNIT : m

## PUMP

Pump Cell	1208
Control System	Closed Free Flow Hydraulic
Main Pump	A4VG125
Concrete Cylinder (mm)	Dia.200
	Stroke 1,200
Drive Cylinder (mm)	Dia.110
	Stroke 1,200
Theoretical Concrete Output (m <sup>3</sup> /h)	81 (rod) / 54 (piston)
Theoretical Concrete Pressure (bar)	71 (rod) / 106 (piston)
Stroke No. (per minute)	36 (rod) / 24 (piston)
Transfer Tube Type	S-Tube, S2012 (Dia. 200-125mm)
Hopper Volume (liter)	400

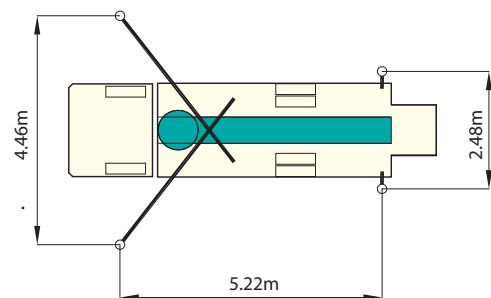
## BOOM

Folding Type	4 Stage Z-folding
Slewing Angle	360
Max. Vertical Reach	21m
Max. Horizontal Reach	16.8m
Max. Depth Reach	11.8m (incl. End Hose 2.5m)
Unfolding Height	5m
End Hose Length	2.5m
Delivery Pipe Dia.	100mm

## OUTRIGGER

Front Outrigger	One Stage Diagonal Extension
	Full Spread Width 4.46m
Rear Outrigger Type	Fixed Jack Cylinder
	Full Spread Width 2.48m

## OUTRIGGER SPREAD



Note) Technical amendments are reserved. The specifications are subject to change with or without prior notice.

# EVERDIGM

EVERDIGM is large sized company with \$250M turnover providing customers across the world with its quality products. EVERDIGM has been working and growing based on the platform of advanced quality, professionalism and real satisfaction. Standing behind the customers taking responsibility at all stage its product life cycle is EVERDIGM's commitment.



## Build the Future

The spirit, "build the future", enables EVERDIGM to make a remarkable growth over 80 countries now. EVERDIGM offers the best value concrete pump which is key to build the brighter future for dealers and customers.

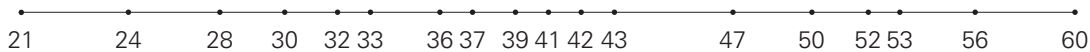
## Concrete Pump

- Free Flow Hydraulic System
- Boom Pump Ranging from 21M to 60M
- Placing Boom of Various Design
- High Pressure Trailer and Line Pump



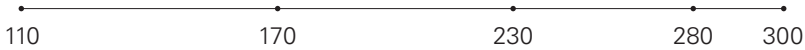
### Truck Mounted Boom Pump Line-up (Max. Vertical Reach)

Unit : m



### Trailer Pump Line-up (Max. Concrete Pressure)

Unit : bar



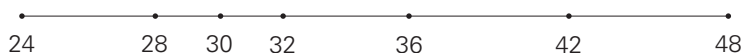
### Line Pump Line-up (Max. Concrete Pressure)

Unit : bar



### Placing Boom Line-up (Max. Horizontal Reach)

Unit : m



Distributed by

**Head Office & Factory**  
332-3, Janggwan-Ri, Jincheon-Eub, Chungcheongbuk-Do, Korea  
Tel\_+82-43-530-3300 Fax\_+82-43-530-3429

**Sales & Marketing Office**  
Room #1203, Woolim Lion's Valley 2, 680, Gasan-Dong, Geumcheon-Gu, Seoul, Korea  
Tel\_+82-2-801-0800 Fax\_+82-2-801-0899

@EVERDIGM Corp. Printed in Korea

