

DOOSAN

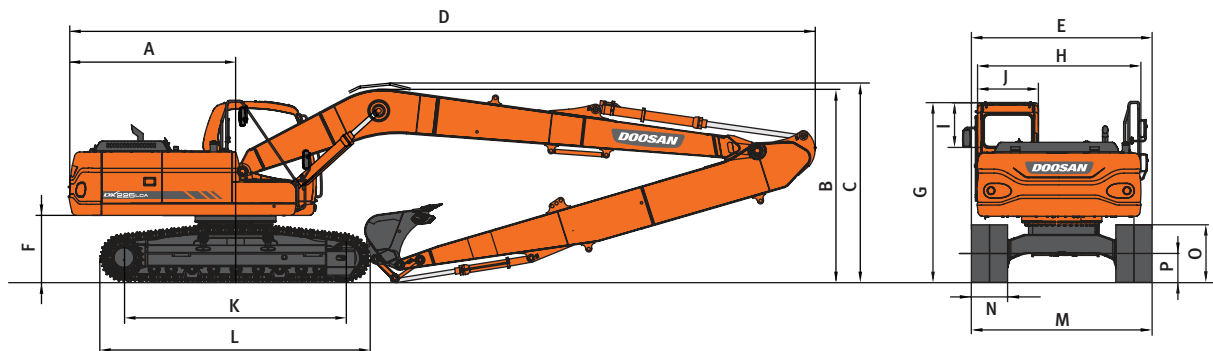
Construction Equipment

DX225LCA SLR

| | |
|--------------------|---|
| Engine Power | SAE J1349, net 110kW (148HP) @ 1,900rpm |
| Operational Weight | 23,200kg |
| Bucket / PCSA | 0.39m ³ (0.51cu.yd) |



DIMENSIONS



Dimensions

| | | | |
|-------------------------|-------------------|---|--------|
| BOOM TYPE (ONE PIECE) | (mm) | | 8,500 |
| ARM TYPE | (mm) | | 6,200 |
| BUCKET TYPE (PCSA) | (m ³) | | 0.39 |
| TAIL SWING RADIUS | (mm) | A | 2,750 |
| SHIPPING HEIGHT (BOOM) | (mm) | B | 3,175 |
| SHIPPING HEIGHT (HOSE) | (mm) | C | 3,254 |
| SHIPPING LENGTH | (mm) | D | 12,317 |
| SHIPPING WIDTH | (mm) | E | 2,990 |
| C/WEIGHT CLEARANCE | (mm) | F | 1,055 |
| HEIGHT OVER CAB. | (mm) | G | 2,975 |
| HOUSE WIDTH | (mm) | H | 2,710 |
| CAB. HEIGHT ABOVE HOUSE | (mm) | I | 845 |
| CAB. WIDTH | (mm) | J | 960 |
| TUMBLER DISTANCE | (mm) | K | 3,650 |
| TRACK LENGTH | (mm) | L | 4,445 |
| UNDERCARRIAGE WIDTH | (mm) | M | 2,990 |
| SHOE WIDTH | (mm) | N | 600 |
| TRACK HEIGHT | (mm) | O | 947 |
| CAR BODY CLEARANCE | (mm) | P | 480 |

Digging Force (ISO)

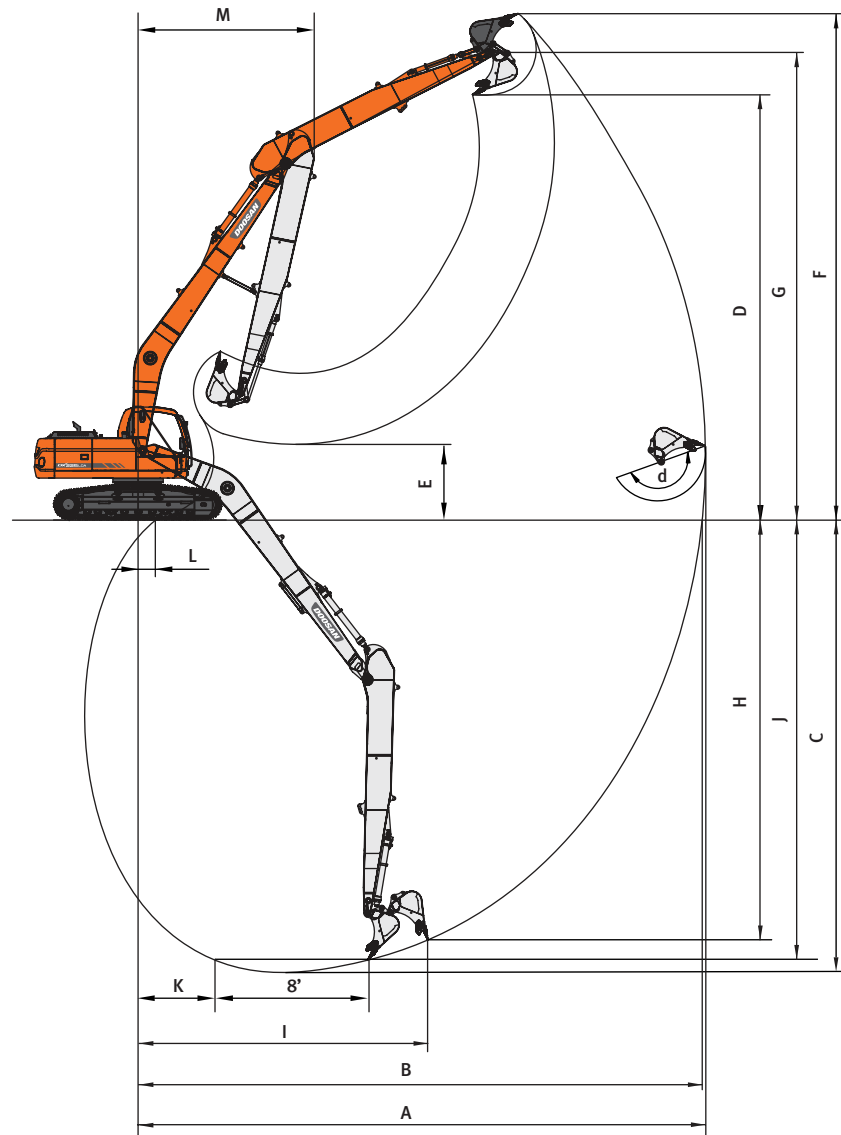
| | |
|---------------|--------------------|
| BUCKET (PCSA) | 0.39m ³ |
| | 10,000kgf |
| DIGGING FORCE | 98.1kN |
| | 22,046lbf |
| ARM | 6,200mm |
| | 5,980kgf |
| DIGGING FORCE | 58.7kN |
| | 13,183lbf |

Weight Boom : 8,500mm (27'11") Arm : 6,200mm (20'4") Bucket : PCSA 0.39m³ (0.51yd³)

| SHOE TYPE | SHOE WIDTH | OPERATING WEIGHT | GROUND PRESSURE (kgf/cm ²) |
|----------------|---------------|---------------------|---|
| TRIPLE GROUSER | 600mm (2') | 23,200kg (51,147lb) | 0.49kgf/cm ² (48.1kpa, 7.0psi) |
| | 700mm (2'4") | 23,500kg (51,809lb) | 0.43kgf/cm ² (42.2kpa, 6.1psi) |
| | 800mm (2'8") | 23,800kg (52,470lb) | 0.38kgf/cm ² (37.3kpa, 5.4psi) |
| | 900mm (2'11") | 24,100kg (53,131lb) | 0.33kgf/cm ² (32.4kpa, 4.7psi) |

WORKING RANGES

DX225LCA SLR



Working Ranges

| | | | |
|-----------------------------|-------------------|---|--------|
| BOOM TYPE (ONE PIECE) | (mm) | | 8,500 |
| ARM TYPE | (mm) | | 6,200 |
| BUCKET TYPE (PCSA) | (m ³) | | 0.39 |
| MAX. DIGGING REACH | (mm) | A | 15,379 |
| MAX. DIGGING REACH (GROUND) | (mm) | B | 15,268 |
| MAX. DIGGING DEPTH | (mm) | C | 11,661 |
| MAX. LOADING HEIGHT | (mm) | D | 11,148 |
| MIN. LOADING HEIGHT | (mm) | E | 2,009 |
| MAX. DIGGING HEIGHT | (mm) | F | 13,403 |
| MAX. BUCKET PIN HEIGHT | (mm) | G | 12,380 |
| MAX. VERTICAL WALL DEPTH | (mm) | H | 9,729 |
| MAX. RADIUS VERTICAL | (mm) | I | 10,064 |
| MAX. DEPTH TO 8' LINE | (mm) | J | 11,561 |
| MIN. RADIUS 8' LINE | (mm) | K | 4,854 |
| MIN. DIGGING REACH | (mm) | L | 196 |
| MIN. SWING RADIUS | (mm) | M | 4,714 |
| BUCKET ANGLE | (deg) | d | 166 |

Engine

| | |
|-------------------------------|---|
| Model | Doosan DB58TIS |
| Nominal flywheel power | 110kW (148HP) @ 1,900rpm (SAE J1349, net) |
| Piston displacement | 5,785cc (353cu.in) |

Swing Mechanism

- An axial piston motor with two-stage planetary reduction gear is used for the swing.
- Increased swing torque reduces swing time.
- Internal induction-hardened gear.
- Internal gear and pinion immersed in lubricant bath.
- The swing brake for parking is activated by spring and released hydraulically.

| | |
|--------------------------|-----------------------------|
| Swing speed | 0 to 11.0rpm |
| Max. swing torque | 6,477 kgf.m (46,631 lbf.ft) |

Drive

Each track is driven by an independent axial piston motor through a planetary reduction gearbox.
Two levers with control pedals guarantee smooth travel with counter rotation on demand.

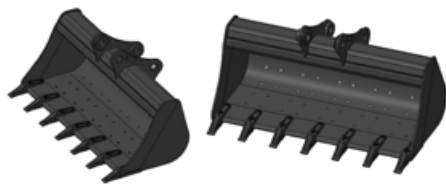
| | |
|---------------------------------|---|
| Travel speed (fast/slow) | 5.5 / 3.0km/h (3.4 / 1.9mph) |
| Maximum traction force | 11,700 / 22,200kgf (25,794 / 48,942lbf) |
| Maximum grade | 35° / 70% |

Refill Capacities

| | |
|---|---------------------------------|
| Fuel tank | 400 ℓ (105.7US gal, 88lmp gal) |
| Cooling system (Radiator capacity) | 24 ℓ (6.3US gal, 5.3lmp gal) |
| Engine oil | 27 ℓ (7.1US gal, 5.9lmp gal) |
| Swing drive | 5 ℓ (1.32US gal, 1.1lmp gal) |
| Final drive (each) | 3.3 ℓ (0.87US gal, 0.73lmp gal) |
| Hydraulic system | 240 ℓ (63.4US gal, 52.8lmp gal) |
| Hydraulic tank | 195 ℓ (51.4US gal, 42.8lmp gal) |

Options

- 0.45m³ bucket-ditch cleaning
- 0.54m³ bucket-ditch cleaning
- 0.51m³ GP bucket



Hydraulic System

The heart of the system is the e-EPOS (Electronic Power Optimizing System). It allows the efficiency of the system to be optimized for all working conditions and minimizes fuel consumption.

- The hydraulic system enables independent or combined operations.
- Two travel speeds offer either increased torque or high speed tracking.
- Cross-sensing pump system for fuel savings.
- Auto deceleration system.
- Two operating modes, two power modes.
- Button control of flow in auxiliary equipment circuits.
- Computer-aided pump power control.

Main pumps

2 variable displacement axial piston pumps
Max flow: 2 X 206.5 ℓ /min (2 X 55US gpm, 2 X 45lmp gpm)

Pilot pump

Gear pump - max flow: 28.5 ℓ /min (7.5US gpm, 6.3lmp gpm)

Maximum system pressure

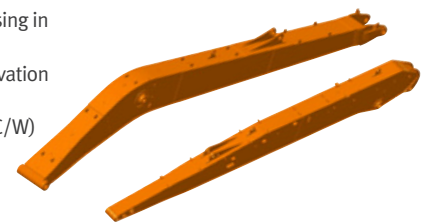
Boom / Arm / Bucket :
- Normal mode : 330kgf/cm² (324bar)
- Power mode : 350kgf/cm² (343bar)
Travel : 330kgf/cm² (324bar)
Swing : 270kgf/cm² (265bar)

Hydraulic Cylinders

The piston rods and cylinder bodies are made of high-strength steel.
A shock absorbing mechanism is fitted in all cylinders to ensure shock-free operation and extend piston life.

| Cylinders | Quantity | Bore x Rod diameter x stroke |
|------------|----------|------------------------------|
| Boom | 2 | 125 X 85 X 1260mm |
| Arm | 1 | 140 X 100 X 1450mm |
| SLR Bucket | 1 | 95 X 65 X 900mm |

Doosan SLR kit is designed for using in drainage canal construction and preservation and Light duty excavation at long distance.
(should be equipped additional C/W)



Bucket

| Capacity | | Width | | Weight | Recommendation |
|---|--------------------|----------------------|-------------------|---------------|-----------------------|
| PCSA, heaped | CECE heaped | Without side cutters | With side cutters | | 8,500mm (27'11") Boom |
| 0.39m ³ (0.51yd ³) | 0.35m ³ | 736mm (2'5") | 820mm (2'8") | 309kg (681lb) | 6,200 (20'4") Arm |
| | | | | | A |

Based on ISO 10567 and SAE J296, arm length without quick change clamp

A : Suitable for materials with density of 2,100kg/m³ (3500lb/yd³) or less
B : Suitable for materials with density of 1,800kg/m³ (3000lb/yd³) or less
C : Suitable for materials with density of 1,500kg/m³ (2500lb/yd³) or less
D : Suitable for materials with density of 1,200kg/m³ (2000lb/yd³) or less

A Solid Promise



Doosan Infracore Korea Office (HQ)
27/F, Doosan Tower 18-12, Euljiro-6Ga, Jung-Gu
Seoul 100-730 Korea
Tel : 82 2 3398 8114

www.doosaninfracore.com/ce/

Published in September 2015_EN

Materials and Specifications in the catalogue are subject to change without notice.